

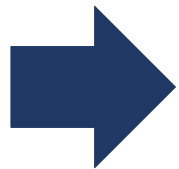


LONG FIBRE PRODUCTION FOR LOCAL VALUE CHAINS

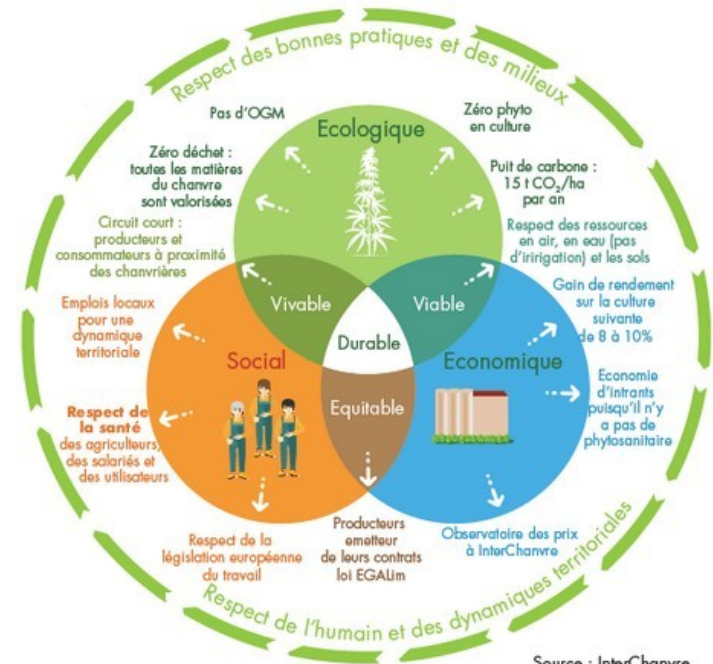


BIO-ECONOMY TO FIGHT CLIMATE CHANGE

- We are nowadays facing the urgency of responding to climate change, and other critical issues (biodiversity, water, relocation, soil regeneration...)



Biobased materials and economy are a part of the issue



Source : InterChanvre

TIME TO MAKE HEMP GREAT AGAIN



- The global textile industry is moving for much more sustainability and environmental care
- Hemp is to be the **ROCK-STAR** of the new textile natural fibres
- **15t eq CO2/year/ha + other advantages**
- many countries are pushing for Made in Local and re industrialization



Lacapelle-Morival
Hemp-Act
Le chanvre passe à l'acte
Texte de Patrick Trépoire - Photo



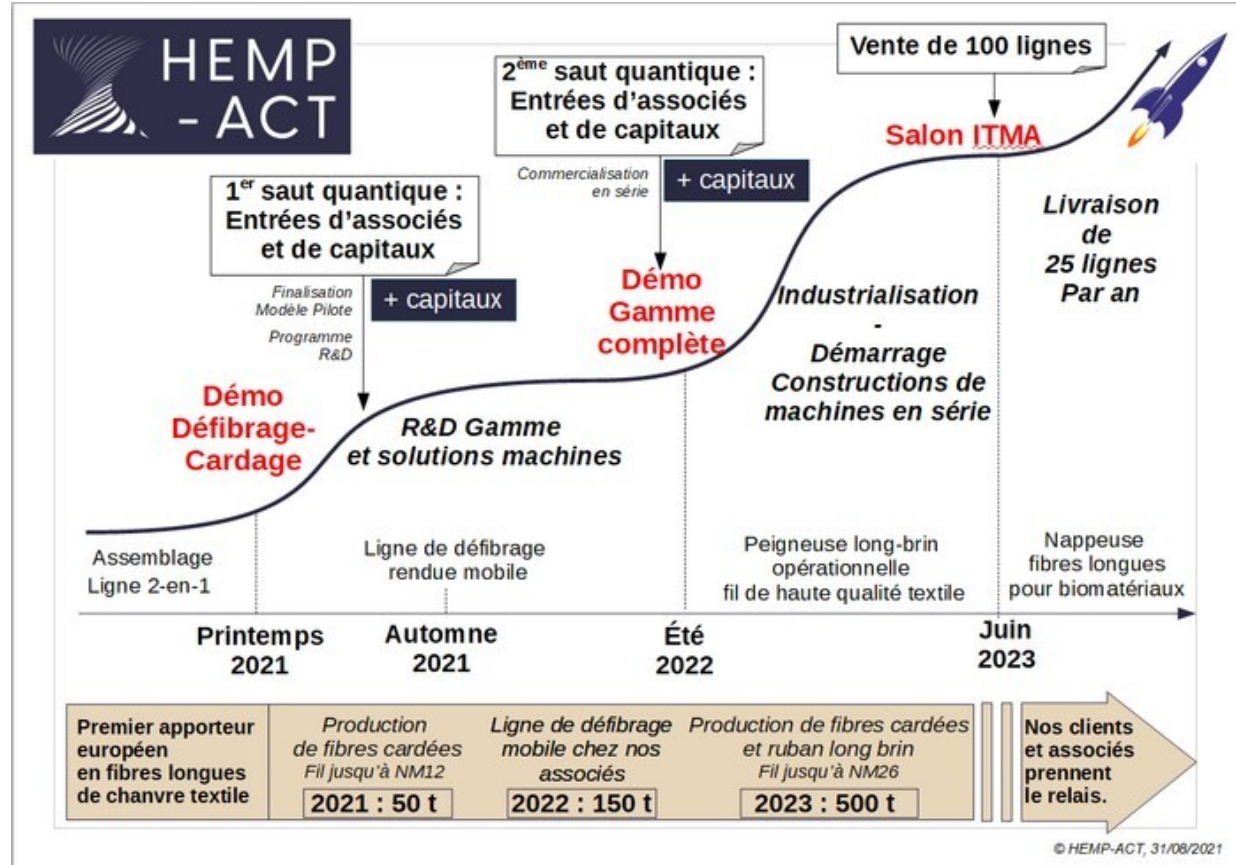
TIME TO UPSCALE THE GOOD SOLUTIONS

Committed by a century
of non industrialisation,
HEMP-ACT's innovations
aims

to revolutionize the
process

in order to massify the
uses.

**We foresee hundred
Millions of ha by 2050**



2 MAIN ISSUES, A UNIQUE POSITIONNING

Beyond our technical solutions, we aim to offer a **new model of development**, efficient both economically and environmentally : **locally based**

We have included this two constraints in the definition of our process and the design of our solutions

This drive us to specialize in **long hemp fibre extraction and valuation both for textile market and bio-composites reinforcement.**



Crédit photos : C.Pelaprat/biljara.com

LONG FIBRES TECHNICAL CHALLENGE

- **Designing a complete process** from farming to industrial products and uses (3 main devices)
- **roller beakers only** for long textile grade fibres,
- **making it easy** : using as much as possible the regular farming tools
- **making it simple** : rolling and unrolling straw bales, decorticating, then rolling again the long fibres, to unroll them for second step processing...
- **Making it efficient and energy saving** : avoiding fibre winding and using field retting



LOCAL VALUE CHAIN SIZING FOR EFFICIENCY

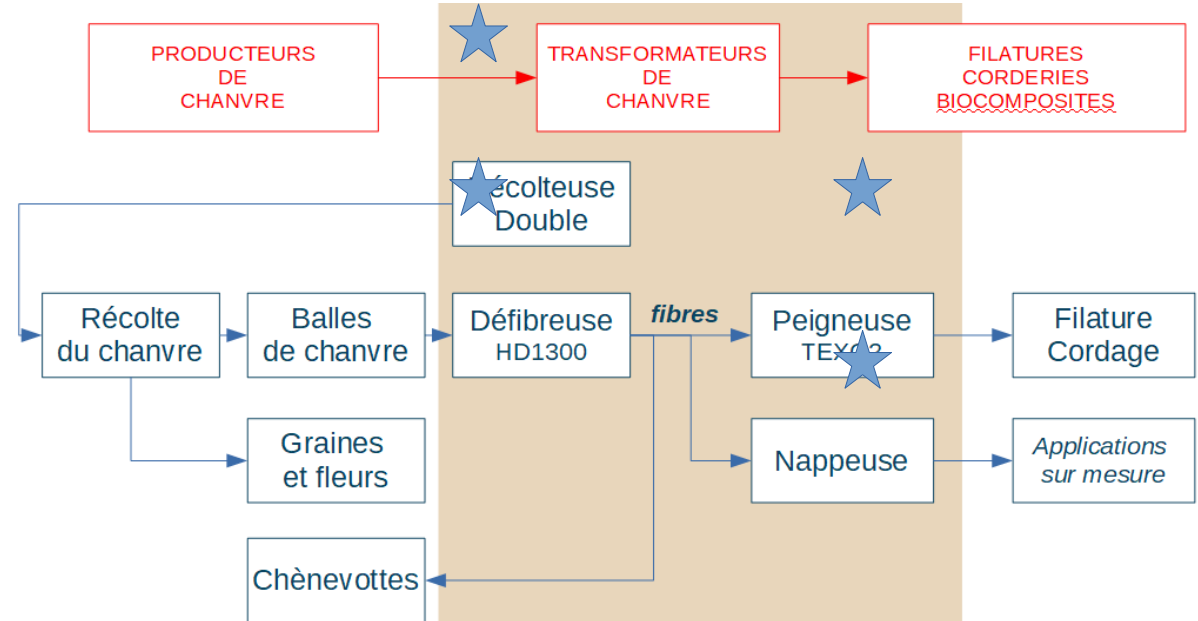
- **Decortication yield : 1t input/hour**
- 1500 tons/shift/year = **300 ha/shift/year**
- Very little needs and investment for real estate
- **Requested investment for machinery : less than one Million euros** (ongoing commercial offer)
- 2 operators and 80 kw embbeded
- **Very quick ROI**
- **Break even point : 200 ha**



Crédit photos : C.Pelaprat/biljara.com

FROM FARMING TO SPINNING OUR RANGE OF SOLUTIONS, INCLUDING TRAINING

- Dedicated solutions for linked partners (local ecosystem)
- **Training and experiencing knowhow and knowledge transfert**
- **Your R&D and project seeding offer**



FROM LONG TO SHORT : THE WHOLE RANGE OF FIBRES FOR YOUR MARKETS



Our long fibres decorticating line to allows our clients to choose the full range of possibility :

- **long fibres** “filasse” from 600 to 1000 mm,
- **textile tows** from 150 to 400 mm,
- **Technical fibers** shortened at 70 mm
- **Cotonised fibres** 25 mm, for blended yarn

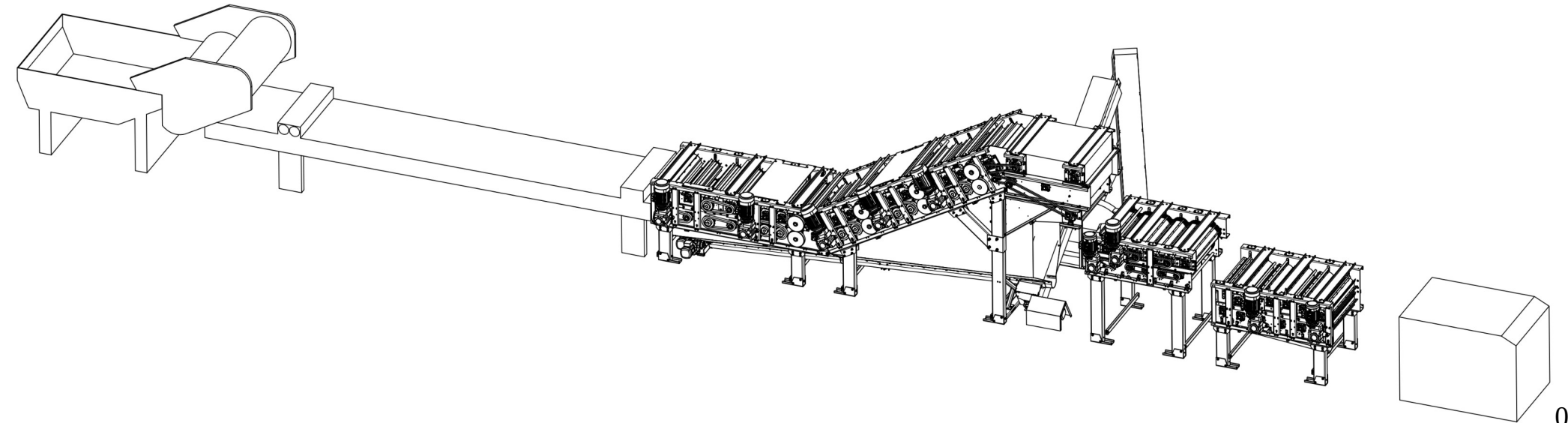
Decorticating is the beginning then the fibres may be finished, shortened, shredded, thershed and packed with any devices of your choice, regarding your main markets



Crédit photos : C.Pelaprat/biljara.com

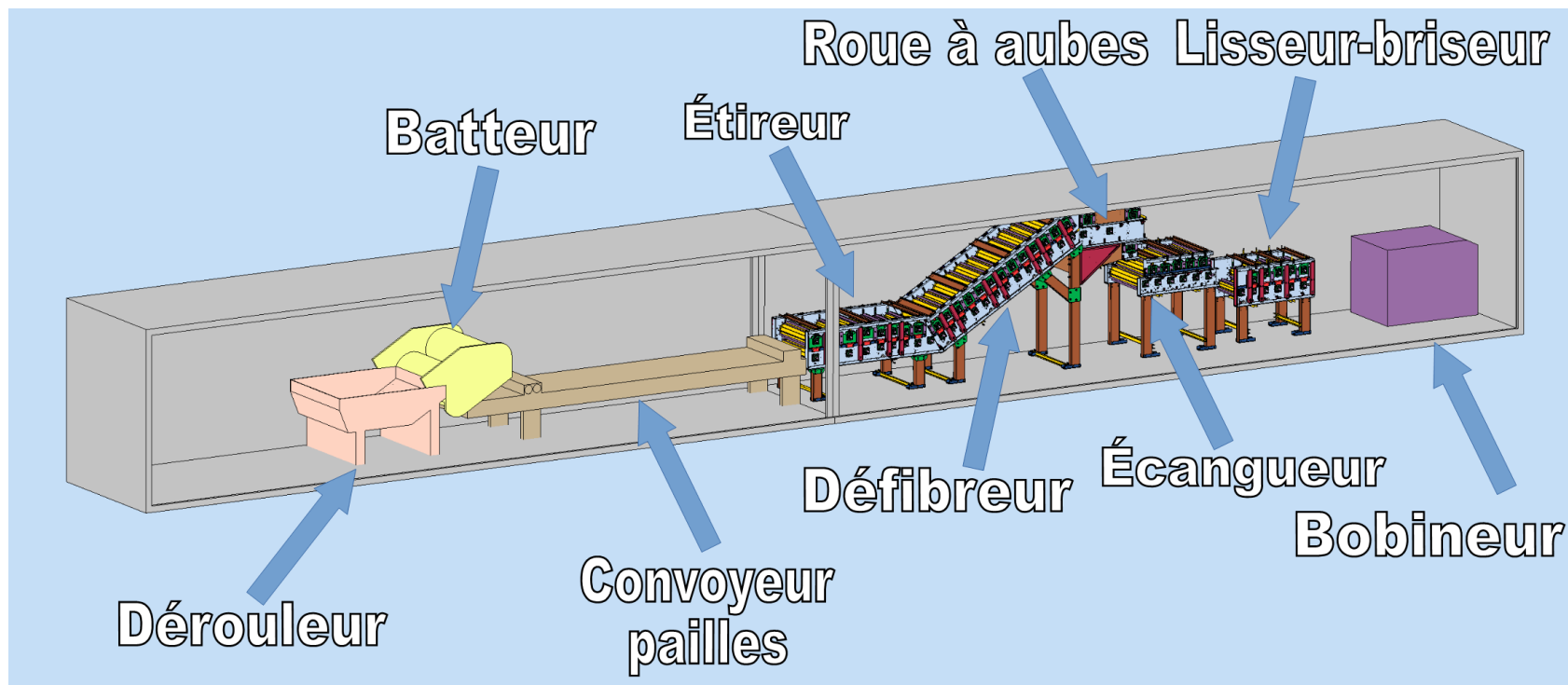
THE MISSING LINK : A DECORTICATOR IN SERIES

- Our pilot plant built in 2021 is **now commissioned and starts operating.**
- We are dealing with design office and constructor to start serialization



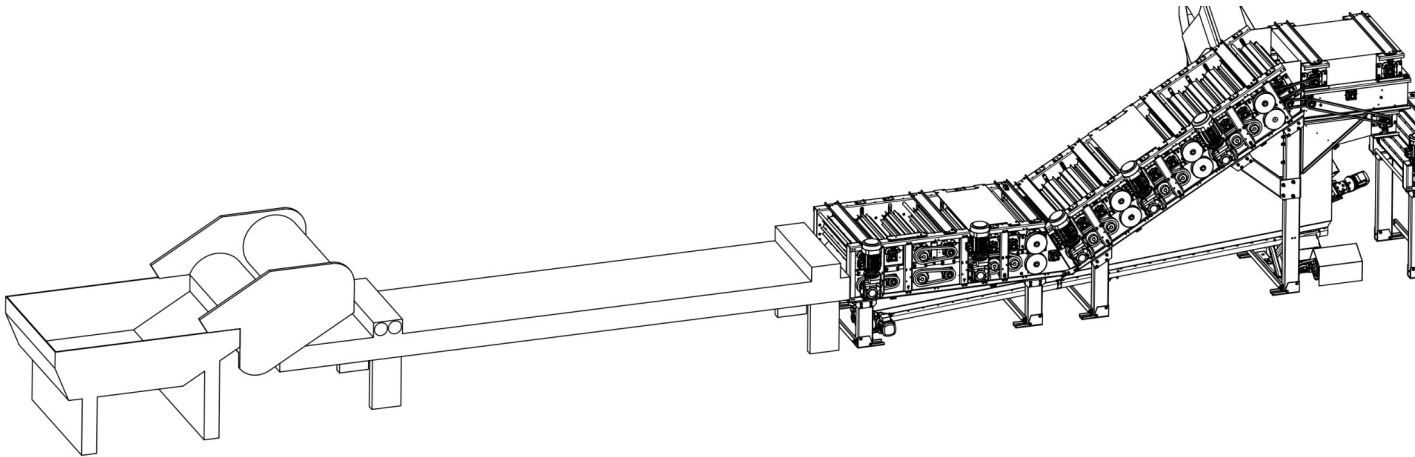
ONGOING SERIALIZATION

- By the end of 2022 : our commercial offer
- From early 2024 : the first deliveries



A FIRST SERIE OF HEMP DECORTICATORS

- To satisfy demands from our network we decided to launch a **first serie of decortivating line.**
- Completed with some industrial textile devices this first serie will allow our clients **to produce textile tows, technical fibres and cotonized fibres**
- Their ability to produce long hemp fibres is still on tracks



+

some industrial
textile devices
Fine opener, thresher,
, cutter, baler...

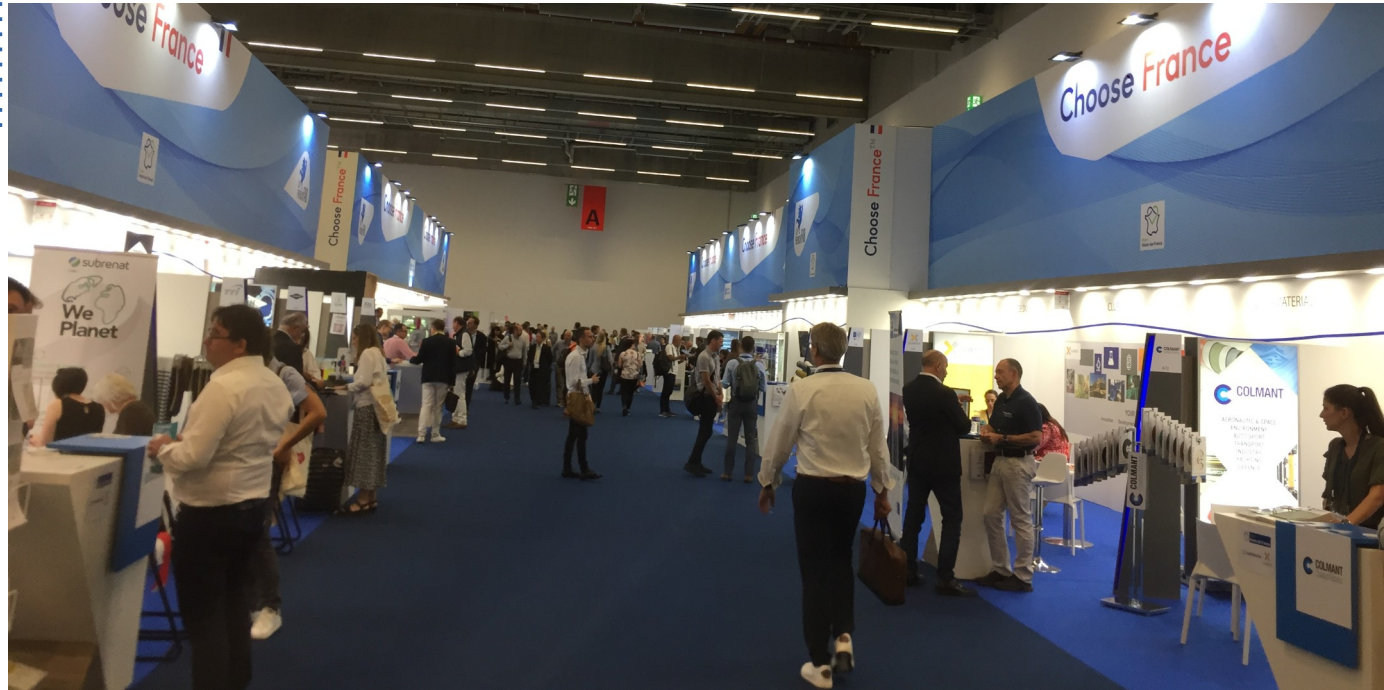
ITMA MILANO JUNE 2023



**Our commercial
launch on the
biggest dedicated
fair in the world**



**FRENCH TEXTILE
EQUIPMENT**



10TH IHBA SYMPOSIUM AT HEMP-ACT HQ



**11 th afternoon,
demonstrations :**

- Sprayers for hempcrete
- **Our pilot
Decortivating Line**

**You 're welcome
please register :**

<https://internationalhempbuilding.org>





CONTACT

Pierre Amadiou, Président

TEL : + 33 (0)6 03 96 16 28

contact@hemp-act.com

Betille 46 120 Lacapelle-Marival / FR

hemp-act.com